

EVOLO Motorist Emergency Phone Sign

EVOLO Motorist Emergency Phone Sign is illuminated emergency telephone sign constructed for use in harsh tunnel environment with high visibility to passing motorist drivers. It is designed with die-cast aluminum housing and frame.

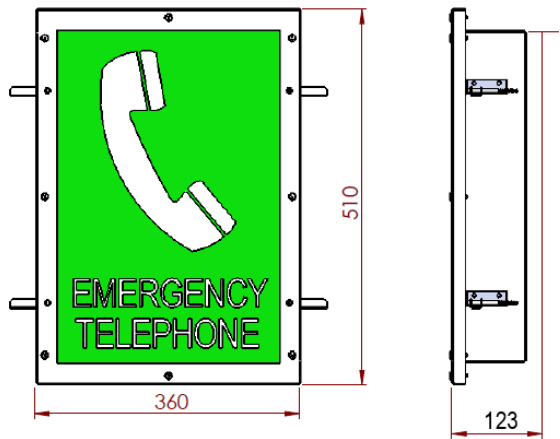
FEATURES AND BENEFITS

- Illuminated Emergency phone sign for use in roadway tunnel and walkways
- Rear cable entry for non-exposure in recessed installation



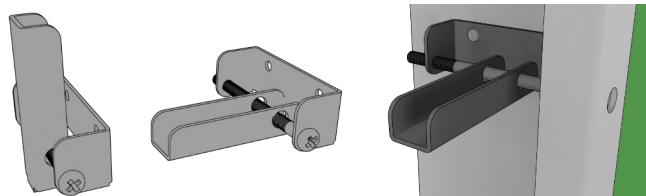
PRODUCT CODE	LENGTH	WIDTH	HEIGHT
EVOMEEP	510	360	123

Motorist Emergency Phone Sign. Dimensions in MM



OPTIONAL ACCESSORIES

- Swing arms for recessed installation



- Fly lead multi-core cables
- Weidmuller HDC Connectors

EVOLO Motorist Emergency Phone Sign

Family Name	Evolu Emergency
Product Code	EVOMEEP
Body Colour	White Powdercoated
Power Rating	7 W
Power Supply	230 V AC
LED Chip	Samsung/Osram
CCT	4000 K
Ambient Temperature	Ta 40°C
IK Rating	IK 08
IP Rating	IP 66
Fitting Weight	5.6 kg
Installation	Recessed
Applications	Roads & Rail Tunnels Underpasses
Standards	AS/NZ 60598 General Requirement and Tests AS/NZ 2293 Emergency Escape Lights
Photometric Data	Available by Request



LED light source inside. We do not recommend service or maintenance in situ or on site. To ensure ongoing integrity and functionality LED luminaires shall be serviced or maintained by a competent person in a clean workshop environment free from dust, dirt and moisture.

SPECIFICATIONS MAY BE SUBJECT TO CHANGE