

# EVOLO Exit 24m with Downlight & Strobe

EVOLO Triangular Exit Sign 24m designed with an additional 4000K downlight is a sturdy fitting illuminated for road and tunnel lighting applications. Accompanied with an industrial grade green strobe for flashing visibility in emergency situations.

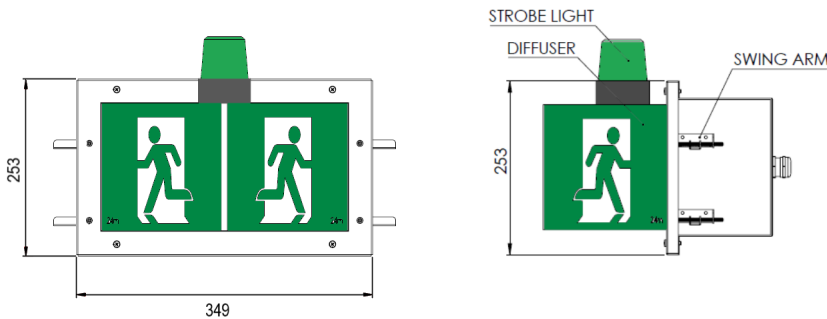
## FEATURES AND BENEFITS

- Triangular Exit Sign with extra 4000K Downlight
- 90fpm Green Strobe
- Powdercoated White Body & Frame
- 24m Viewing Distance
- Easy access rear M20 cable entry



PRODUCT CODE	LENGTH	WIDTH	HEIGHT
EVOEXL24	349	253	349

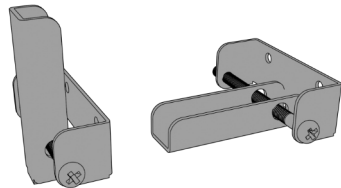
Triangular Exit with Downlight & Strobe 24m. Dimensions in MM



Sydney, North Connex Tunnel

## OPTIONAL ACCESSORIES

- Swing arms for recessed installation



- Fly lead multi-core cables
- Weidmuller HDC Connectors

## EVOLO Exit 24m with Downlight & Strobe

Family Name	Evolu Emergency
Product Code	EVOEXL24
Body Colour	White Powdercoated
Power Rating	6.5 W
Power Supply	230 V AC
LED Chip	Samsung/Osram
CCT	4000 K
Ambient Temperature	Ta 40°C
IK Rating	IK 08
IP Rating	IP 66
Fitting Weight	5.6 kg
Installation	Wall mount
Applications	Roads & Rail Tunnels Underpasses
Standards	AS/NZ 60598 General Requirement and Tests AS/NZ 2293 Emergency Escape Lights
Photometric Data	Available by Request



LED light source inside. We do not recommend service or maintenance in situ or on site. To ensure ongoing integrity and functionality LED luminaires shall be serviced or maintained by a competent person in a clean workshop environment free from dust, dirt and moisture.

SPECIFICATIONS MAY BE SUBJECT TO CHANGE